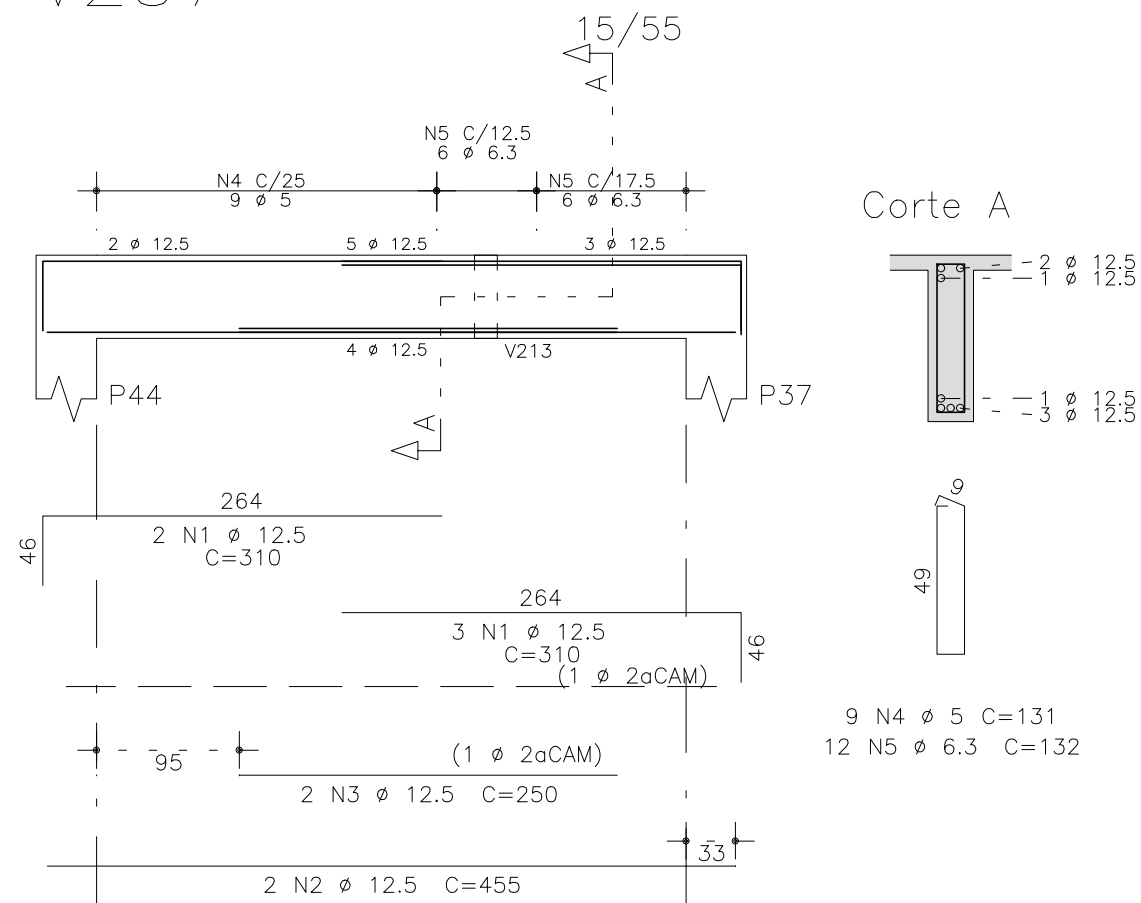
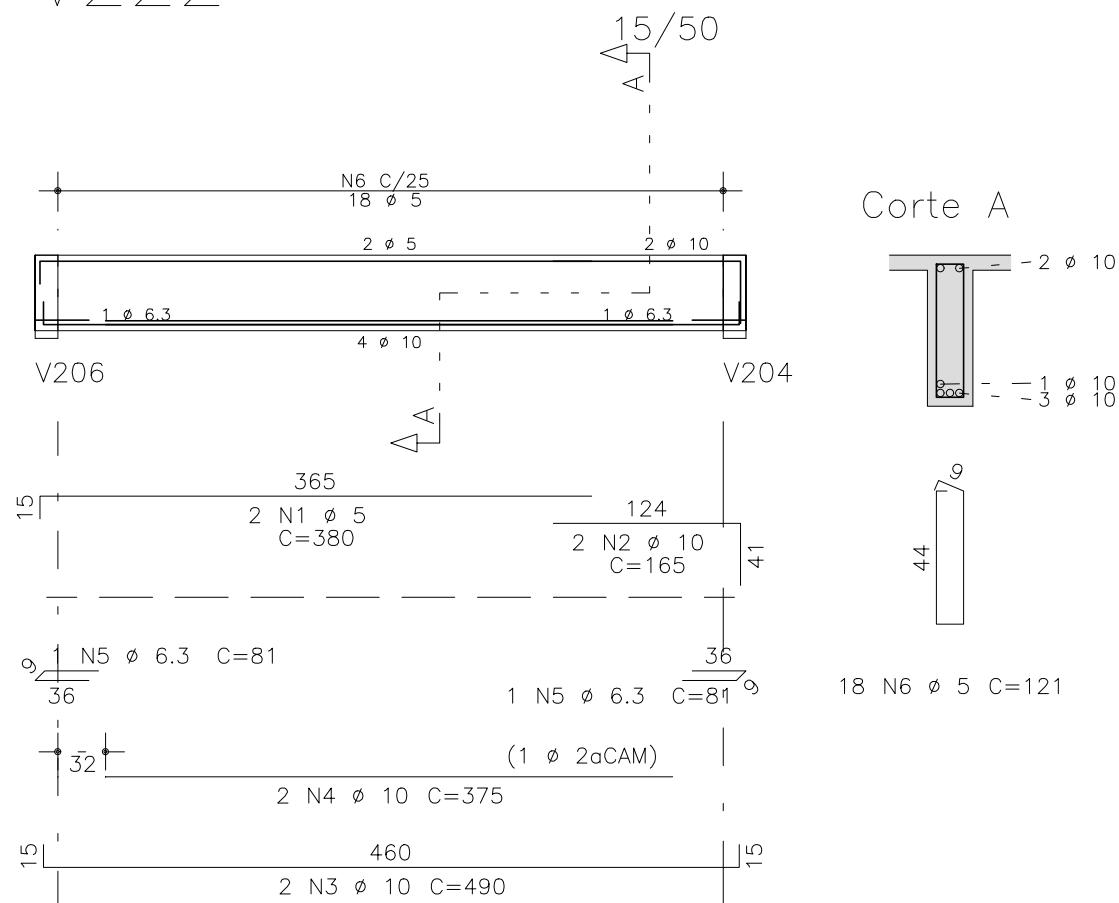


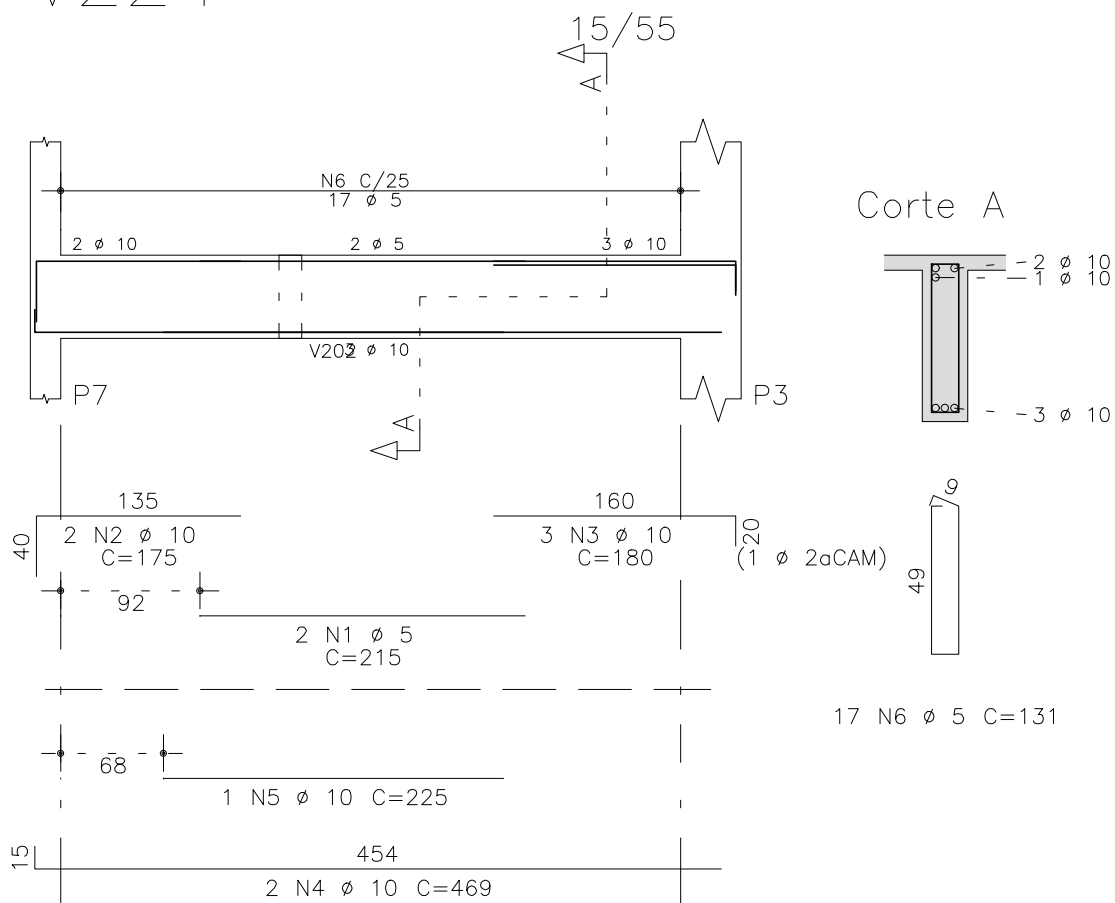
V237



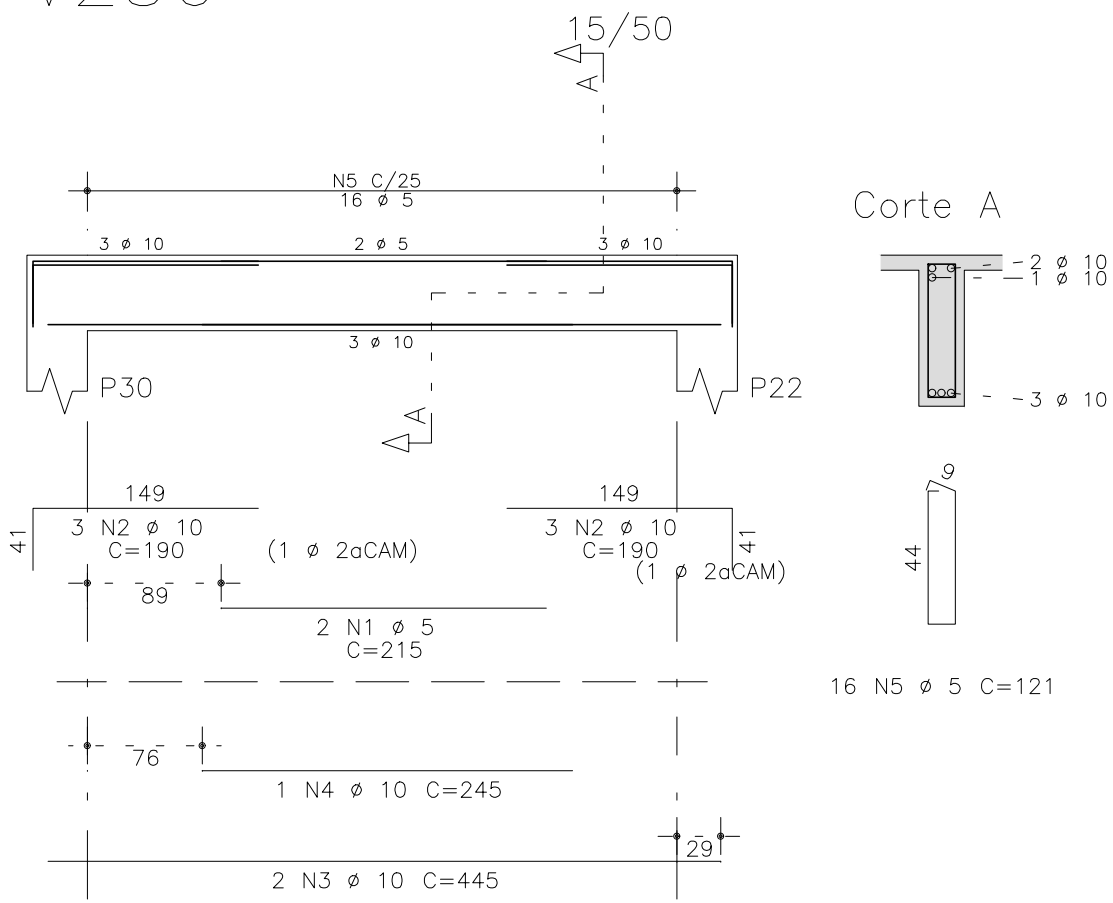
V222



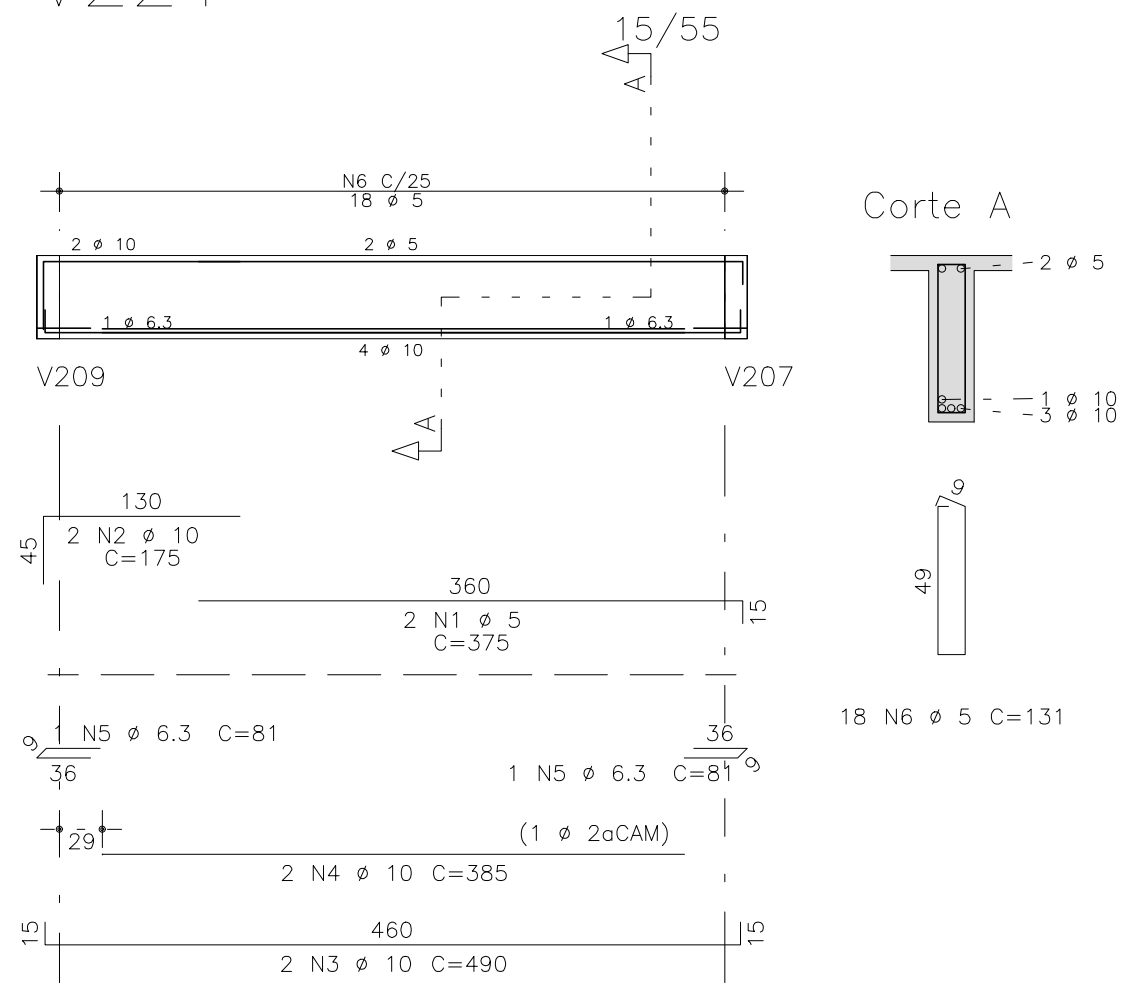
V224



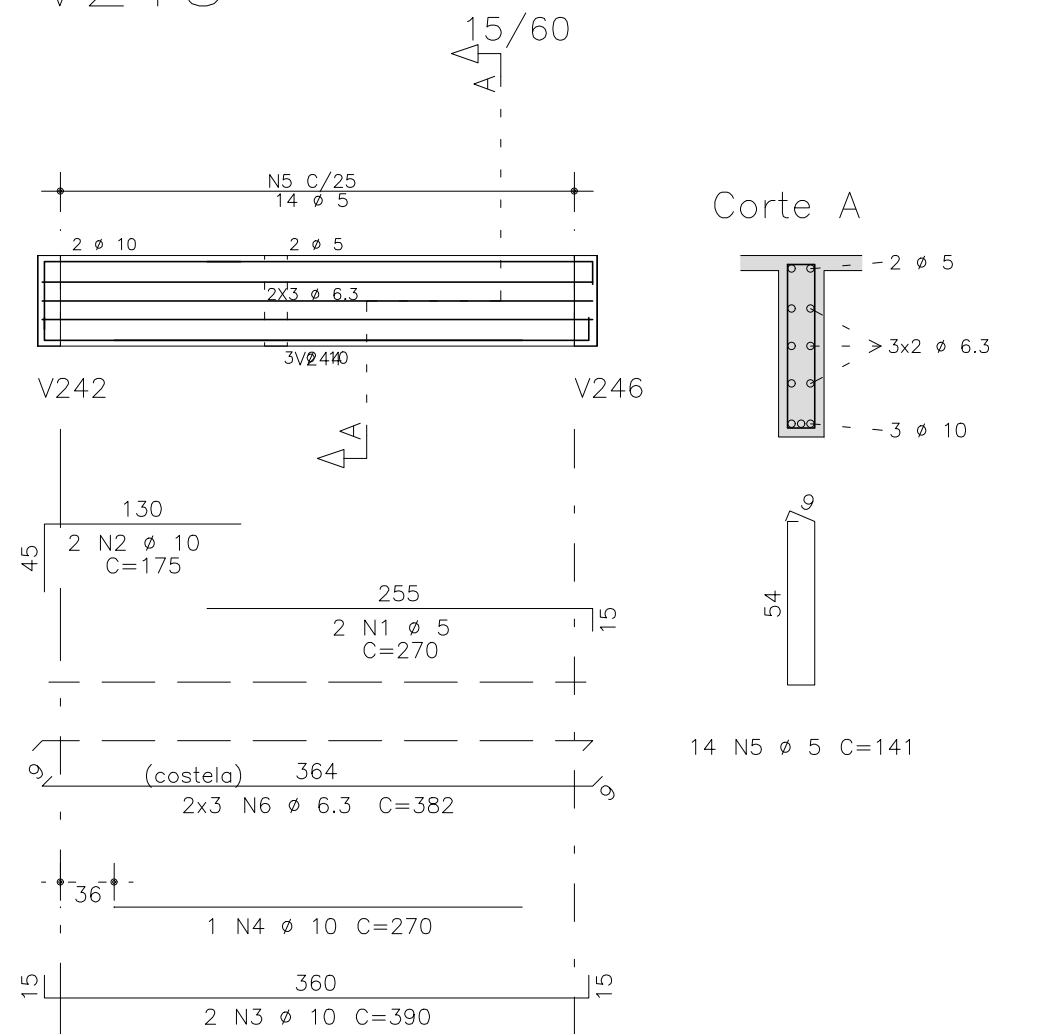
V236



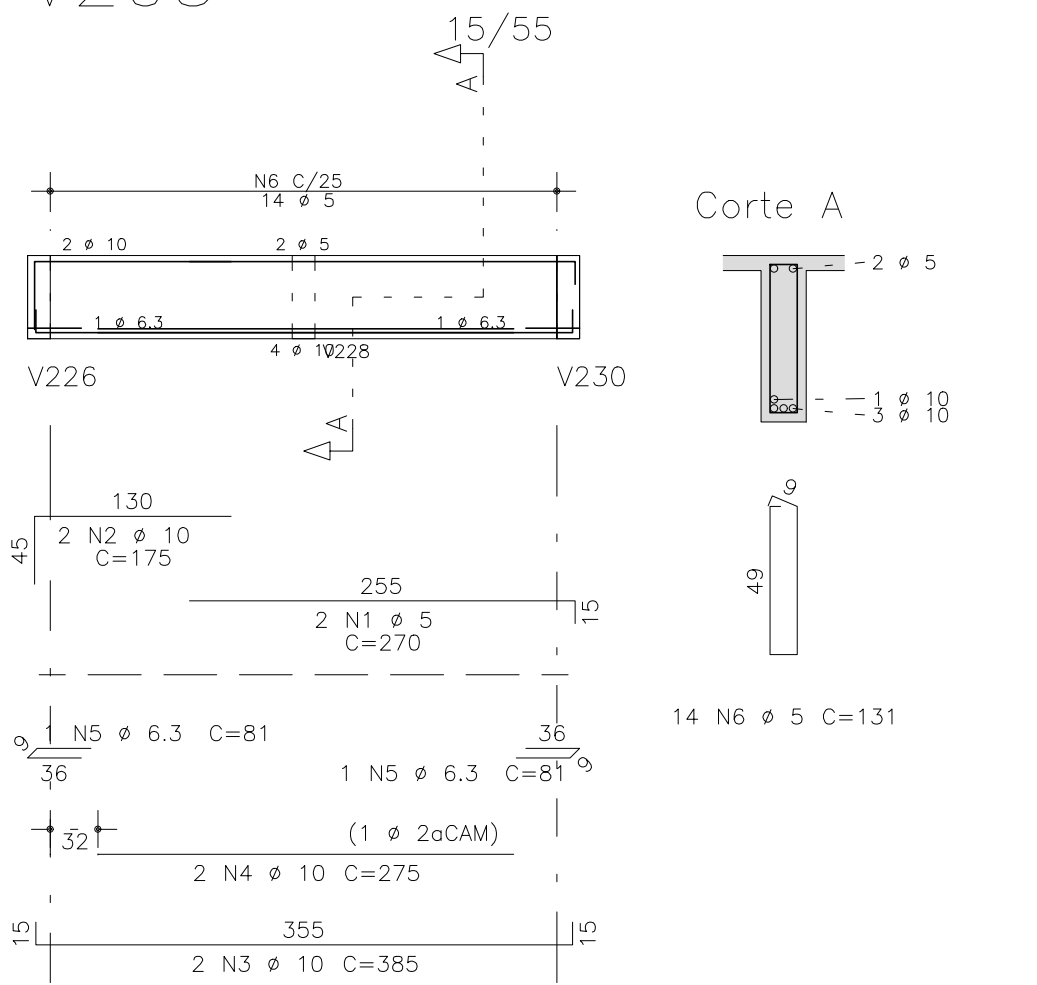
V221



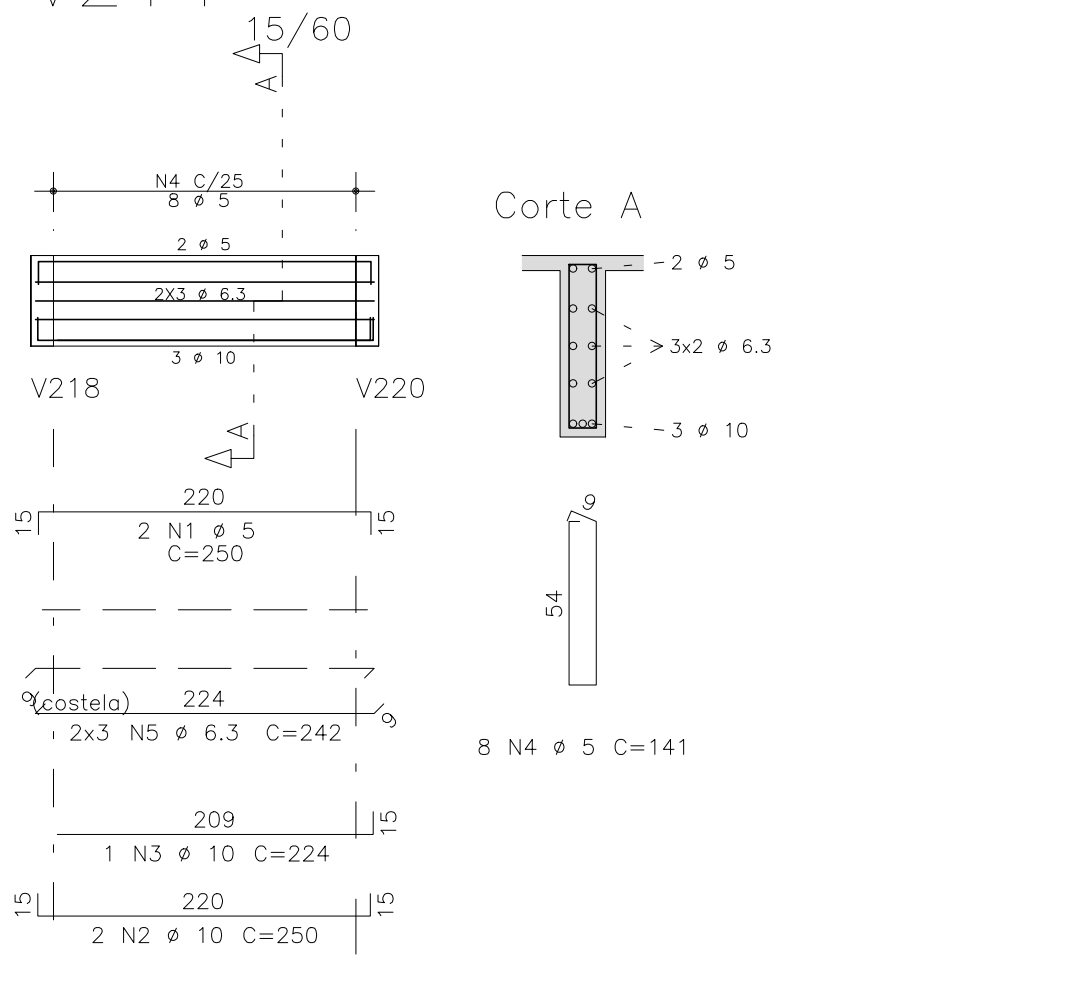
V215



V205



V214



AÇO	POS	BIT (mm)	QUANT	COMPRIMENTO	
				UNIT (cm)	TOTAL (cm)
V205	60B	1	5	2	270
	50A	2	10	2	175
	50A	3	10	2	385
	50A	4	10	2	275
	50A	5	6.3	2	81
	60B	6	5	14	131
V214	60B	1	5	2	250
	50A	2	10	2	250
	50A	3	10	1	224
	60B	4	5	8	141
V215	60B	1	5	2	270
	50A	2	10	2	175
	50A	3	10	2	390
	50A	4	10	1	270
V221	60B	1	5	2	375
	50A	2	10	2	175
	50A	3	10	2	490
	50A	4	10	2	385
V222	60B	1	5	2	380
	50A	2	10	2	165
	50A	3	10	2	490
	50A	4	10	2	375
V224	60B	1	5	2	215
	50A	2	10	2	175
	50A	3	10	3	180
	50A	4	10	2	469
V236	60B	1	5	2	215
	50A	2	10	6	190
	50A	3	10	2	445
	60B	5	5	16	121
V237	50A	1	12.5	5	310
	50A	2	12.5	2	455
	50A	3	12.5	2	250
	60B	4	5	9	131
	50A	5	6.3	12	132

RESUMO AÇO CA 50-60				
AÇO	BIT (mm)	COMPR (m)	PESO (kg)	
60B	5	188	29	
50A	6.3	58	14	
50A	10	123	76	
50A	12.5	30	29	
Peso Total		60B =	29 kg	
Peso Total		50A =	119 kg	

O acesso ao Modelo Estrutural em dimensão pode ser executado pelo QR CODE ao lado, podendo acessar via celulares, tablets e quaisquer outros dispositivos.

Schuring & Schuring

**Schuring & Schuring Ltda.**  
Escritório Técnico B.E.SCHURING – Projetos de Engenharia  
Av. XV de Novembro, 489 – Porto Zo. Andar – Cuiabá MT  
Fone:(065) 321 9959 – Fax:(065) 623 5066 – Email – schuring@terra.com.br

PROJETO:

PROPRIETARIO:

PREFEITURA MUNICIPAL

VARZEA GRANDE MT

RESP. TEC. EXECUCAO:

OBRA:

PREFEITURA MUNICIPAL DE

VARZEA GRANDE MT

Unid. Básica de Saúde

UBS–MATILDE CURVO DE MORAES

END.: Av. dos Bandeirantes.

Conj. Habit. José Carlos Guimarães, Varzea Grande–MT

AUTORES DO PROJETO:

ASSUNTO:

COBERTURA

DET ARM VIGA

PECAS DETALHADAS

V205 / V214 / V215 / V221 / V222 / V224

V236 / V237

FOLHA No.

24